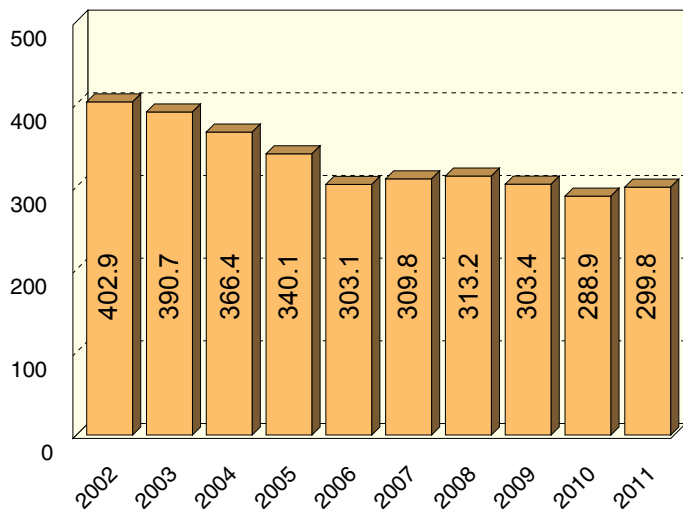


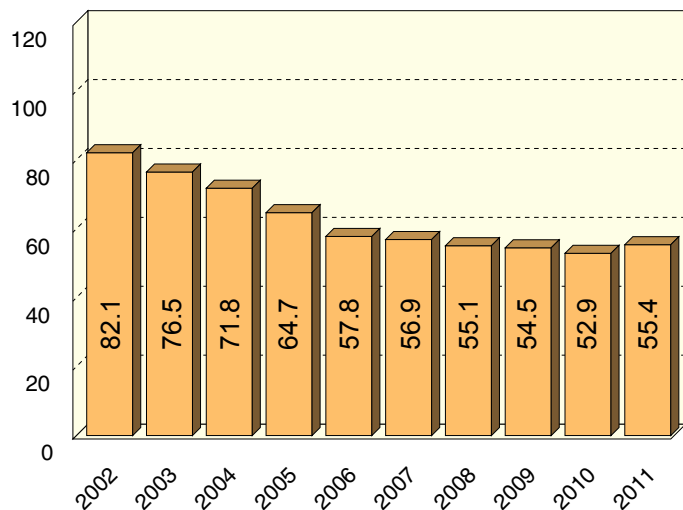
10 YEAR TRENDS

TOTAL CRASH RATE



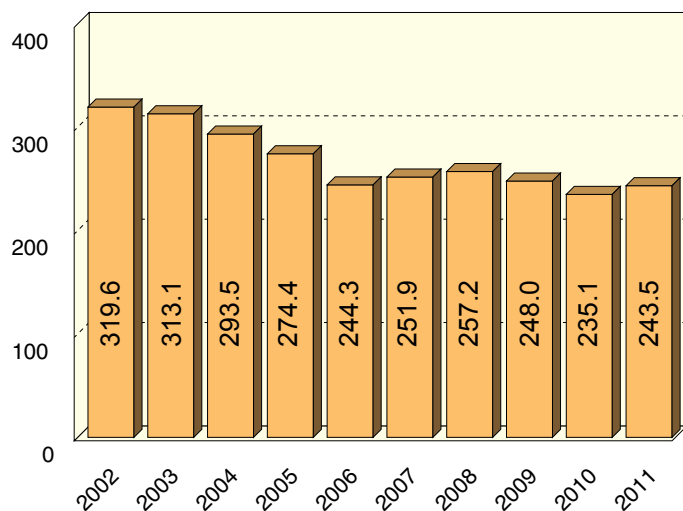
The ten-year total crash rate peaked in 2002 at 402.9 then decreased by 25.6 percent to 299.8 in 2011.

PERSONAL INJURY CRASH RATE



The 55.4 personal injury crash rate in 2011 is a 32.5 percent decrease from 2002.

PROPERTY DAMAGE CRASH RATE



The 243.5 property damage crash rate in 2011 is a 23.8 percent decrease from 2002.